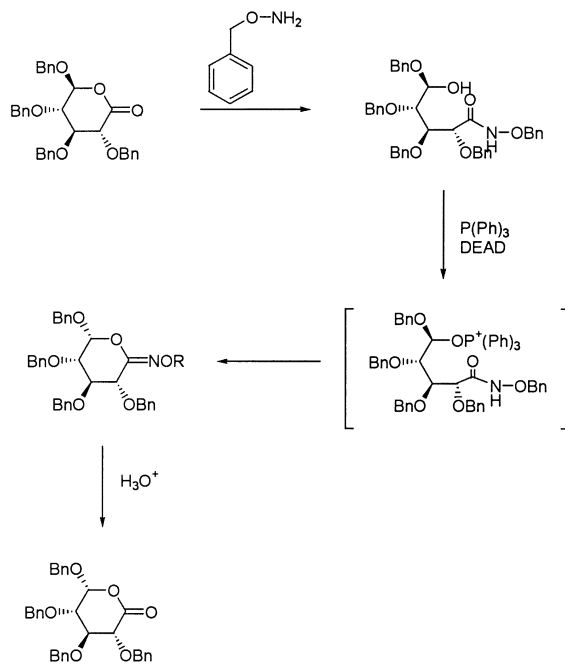


1,5 - (1,5 - lactone) 2 4 5 1,4 - (1,4 - lactone)
 가 L - (L - Ribose), D - (D - Talose)
 L - (L - ribose) (rare sacharides),
 가 L - , L - 가
 , L - (Antiherpes) BW1263w94(Glaxo Wellcome) B
 L - FMAU(Bukwang & Triangle) 가 ,
 가 (: Nucleic acid & Nu
 cleotide 18(2), 187(1999); JP 11/12294; WO 98/39347).
 L - (: WO 99/61648).

1,4 - 1,5 - 4 5
 , 1,5 -
 1 (Mitsunobu) 5
 (: J. Am. Chem. Soc.,122, 2995(2000)):

1

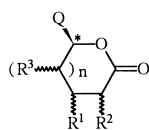


DEAD , O- 가 ,
 N- (lactam)

1,4- 1,5- 4 5
 L- D-
 2

1 4 5

1



n 0 1

R¹, R² R³

C₁ - C₆ - , C₂ - C₆ -

가

Q
 C₆ -



R⁴ R⁵

C₁ - C₆ - , C₂ -

, R⁶

C₁ - C₆ - , C₂ - C₆ -

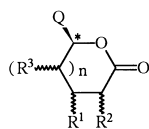
1

2 2
 1 4

5

3

[1]



2



3



n, R¹, R², R³ Q

R' R''

4 - 7 -

C₁ - C₆ -

R C₁ - C₆ -

L



2 2

1

1

2

(co-solvent)
2

가

3

1

1

3

2

.3

3

3

3

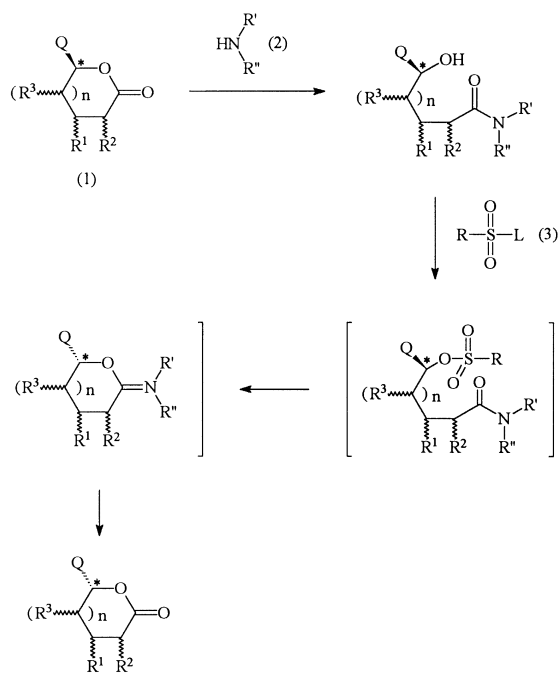
0

-5

30

2

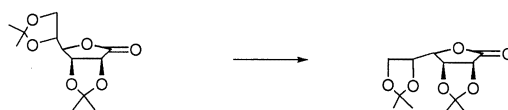
2



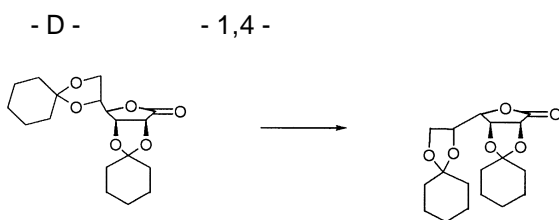
1 2 3
 S 4 5 R S
 4 5
 85%
 R S
 L - , D -

가

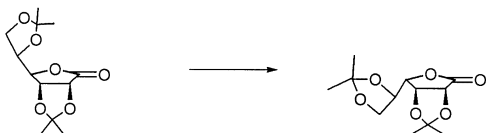
1
 2,3 : 5,6 - -O- -D- -1,4-



2,3 : 5,6 - -O - -D - -1,4 - 16g(62mmole) 32Mℓ
 124mmole 0 TLC ,
 100mg 가 100Mℓ 가 9.6Mℓ(124mmole) 0 (Et₃N) 13.8Mℓ
 TLC
 : / =3/1, v/v) (13.6g, 85.0%)
 2

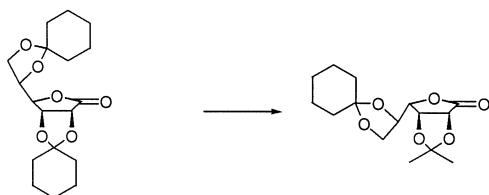


2,3 : 5,6 - -O - -D - -1,4 - 10g(30mmole) 32Mℓ
 60mmole 0 TLC ,
 50mg 가 100Mℓ 가 4.6Mℓ(60mmole) 0 (Et₃N) 6.6Mℓ
 TLC
 : / =4/1, v/v) (8.7g, 87.2%)
 3



2,3 : 5,6 - -O - -L - -1,4 - 13.3g(51mmole) 27Mℓ
 102mmole 0 TLC ,
 (Et₃N) 11.5Mℓ 100mg 가 83Mℓ 가 7.9Mℓ(102mmole) 0
 TLC
 (: / =3/1, v/v) (11.3g, 85.0%)
 4

2,3 : 5,6 - -O - -L - -1,4 -



2,3 : 5,6 - - O - - L - - 1,4 - 12.3g(36.4mmole) 38Mℓ
 73mmole 0 . TLC ,
 100mg 가 120Mℓ 가 . (Et₃N) 8.
 5.6Mℓ(72mmole) 0
 TLC
 (: / =4/1, v/v) (10.5g, 86.0%)

5

2,3,5 - - O - - L - - 1,4 -

 10g(23.9mmole) 20Mℓ 48m
 TLC ,
 50mg 가 50Mℓ 가 . (Et₃N) 5.3Mℓ
 3.7Mℓ(47.6 mmole) 0
 TLC
 / =4/1, v/v) (8.5g, 85.0%) (:)

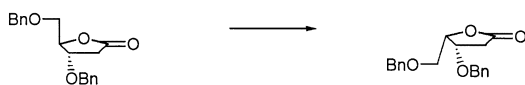
6

5 - O - - 2,3 - O - - L - - 1,4 -

 10g(36.0mmole) 20Mℓ
 TLC ,
 50mg 가 70Mℓ 가 . (Et₃N) 8Mℓ
 5.6Mℓ(72mmole) 0
 TLC
 : / =4/1, v/v) (8.6g, 86.0%) ()

7

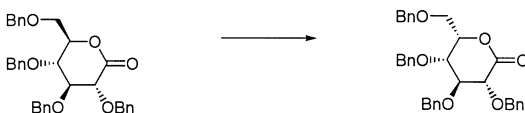
2 - -3,5 - O - - L - - 1,4 -



2 - -3,5 - O - - D - - 1,4 - 10g(32mmole) 20Mℓ 64
 mmole 0
 TLC
 50mg 가 50Mℓ 가 5.0Mℓ(64 mmole) 0 (Et₃N) 7.1Mℓ
 TLC
 / =4/1, v/v) (8.7g, 87.0%) (:
)

8

2,3 : 4,6 - - O - - L - - 1,5 -



2,3 : 4,6 - - O - - D - - 1,4 - 10g(18.5mmole) 20Mℓ
 37mmole 0
 TLC
 50mg 가 30Mℓ 가 2.9Mℓ(37mmole) 0 (Et₃N) 4.2Mℓ
 TLC
 : / =4/1, v/v) (8.8g, 88.0%) ()

L -

D -

1

4

5

(57)

1.

1

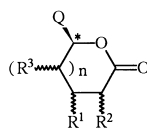
2 2
1

4

5

3

[1]



[2]

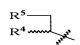


[3]



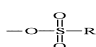
n 0 1 ,

R¹, R² R³ , C₁-C₆- , C₂-C₆- , , 가 ,

Q  R⁴ R⁵ , C₁-C₆- , C₂-
C₆- , R⁶ C₁-C₆- , C₂-C₆- , ,

R' R'' C₁-C₆- , 4- 7-

R C₁-C₆- , ,

L  .

2.

1 , 가 , 1 .

3.

1 , 2 2 , , , 1 1 .

4.

1 , 3 .

5.

1 4 ,
.

6.

1 , -5 30 .